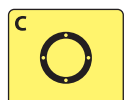
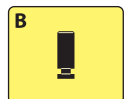
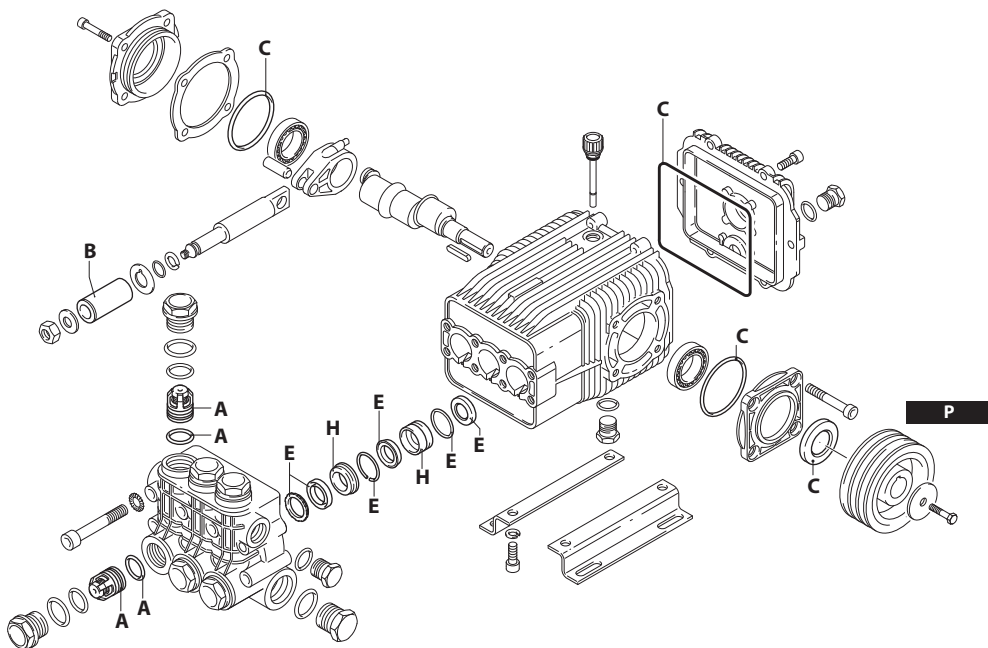


UN002609-FU

KIT RICAMBI / PART KITS



UN002610-FU

194 Series

XWA 1750 rpm N version ø 24 mm

4 G20	4 G30	5.5 G22	5.5 G30	5.5 G40	7 G22
7 G32	7 G35	7 G40	8 G19	8 G29	8 G35
9 G16	9 G24	9 G30			



Pos.	Cod. Part n°	Denominazione	Description	Q.tà Q.ty	Note Vedi / See	Pos.	Cod. Part n°	Denominazione	Description	Q.tà Q.ty	Note Vedi / See
1	1940260	Vite TCEI M 10x80	Screw	8	C=50Nm	31	1940530	Albero eccentrico	Crank shaft	1	● Marcato 6
2	650530	Rosetta	Washer	8			1940190	Albero eccentrico	Crank shaft	1	○ Marcato 4
3	1940140	Tappo	Plug	6	C=68Nm		1940170	Albero eccentrico	Crank shaft	1	■ Marcato 2
4	1940150	Anello	Ring	6			1940160	Albero eccentrico	Crank shaft	1	▲ ◆ Marcato 1
5	1140450	OR Ø 20,24x2,62	O-Ring	12		32	650250	Linguetta	Key	1	
6	1949050	Valvola completa	Complete valve	6		33	1941330	Corpo pompa	Pump housing	1	
7	1940021	Testa pompa	Pump head	1	● ○ ■	34	1140370	Tappo olio	Oil cap	1	
	1941210	Testa pompa	Pump head	1	▲ ◆	35	1260250	Livello olio	Oil indicator	1	⊗
8	550350	OR Ø 23,81x2,62	O-Ring	1		36	1260430	Anello elastico	Snap ring	1	⊗
9	1140300	Tappo 3/4" G	Plug	1		37	1940410	OR Ø 132x3	O-Ring	1	
10	1980740	Tappo 3/8" G	Plug	3	C=35Nm	38	1200430	Vite TCEI M 6x16	Screw	6	C=10,4Nm
11	740290	OR Ø 14x1,78	O-Ring	1	C=25Nm	39	1949010	Cop. post. compl.	Complete cover	1	
12	1940440	Guarn.+anello	Gasket w/ ring	3	● ○ ■ ▲ ✕ (a)	40	1780690	Disco di contrasto	Disc	1	⊗
	1940270	Guarn.+anello	Gasket w/ ring	3	◆ ✕ (a)	41	1140450	OR Ø 20,24x2,62	O-Ring	1	⊗
13	1940430	Guida pist. ant.	Front piston guide	3	● ○ ■ ▲ ✕	42	820680	Anello tenuta	Seal	1	
	1940200	Guida pist. ant.	Front piston guide	3	◆	43	1940560	Anello tenuta	Seal	3	
14	1940470	Guarnizione	Gasket	3	● ○ ■ ▲ ✕	44	1940370	Piede	Base	2	Optional
	1940480	Guarnizione	Gasket	3	◆ ✕	45	1940380	Vite TCEI M 10x18	Screw	4	Optional C=53Nm
15	1940450	Guida pist. post.	Rear piston guide	3	● ○ ■ ▲	46	200231	Rosetta	Washer	4	Optional
	1940460	Guida pist. post.	Rear piston guide	3	◆	47	1941240	Supporto aperto	Open bearing sup.	1	
16	820490	OR Ø 34,65x1,78	O-Ring	3		48	1940290	Puleggia	Pulley	1	
17	1940570	Dado	Nut	3	⊕ C=12Nm	49	780230	Rondella	Washer	1	
18	1940580	Rosetta	Washer	3		50	780060	Vite TCEI M 6x25	Screw	1	
19	1420430	Pistone	Piston	3	● ○ ■ ▲	51	1941220	OR Ø 22x2	O-Ring	3	Tagliato/Cutted
	1420120	Pistone	Piston	3	◆	1949200	Prem.testa	Head pre-assembly	1	■ ▲	
20	880840	OR Ø 9,25x1,78	O-Ring	3		1949202	Prem.testa	Head pre-assembly	1	● ○	
21	960460	Disco separatore	Spacer	3		1949203	Prem.testa	Head pre-assembly	1	◆	
22	1940120	Anello	Ring	3		75	1941270	Livello olio	Oil indicator	1	⊗
23	1940070	Pistone di guida	Guiding piston	3		76	100410	OR Ø 34,6x2,62	O-Ring	1	⊗
24	1940060	Spinotto	Piston pin	3		77	1941260	Disco di contrasto	Disc	1	⊗
25	1941380	OR Ø 66,34x2,62	O-Ring	2		78	1941290	Anello elastico	Snap ring	1	⊗
26	1941390	Spessore 0,05 mm	0,05 mm shim	1÷3		82	1980740	Tappo 3/8" G	Plug	2	⊗ C=20Nm
	1941400	Spessore 0,10 mm	0,10 mm shim	1÷3							
	1941410	Spessore 0,19 mm	0,19 mm shim	1÷3							
	1941420	Spessore 0,25 mm	0,25 mm shim	1÷3							
27	1949011	Coperchio lat. compl.	Comp. side cover	1							
28	850370	Vite TCEI M 8x16	Screw	8							
29	1140410	Cuscinetto	Bearing	2							
30	1940051	Biella	Con-rod	3							

⊗ Compreso nel cod. 1949010 / Part of part n° 1949010

⊕ Compreso nel cod. 1949011 / Part of part n° 1949011

KIT RICAMBI - PART KITS

A=KIT 2780 valvole valves		B=KIT 2650 ø 20 pistoni pistons		B=KIT 1891 ø 22 pistoni pistons		C=KIT 2873 tenute olio oil seals	
Pos.	Q.ty	Pos.	Q.ty	Pos.	Q.ty	Pos.	Q.ty
5	6	19	3	19	3	25	2
6	6					37	1
						42	1
						43	3

E=KIT 2782 ø 20 tenute acqua water seals		E=KIT 2783 ø 22 tenute acqua water seals		H=KIT 2784 ø 20 guida pistoni pistons guide		H=KIT 2785 ø 22 guida pistoni pistons guide	
Pos.	Q.ty	Pos.	Q.ty				
12	3	12	3	13	3	13	3
14	3	14	3	15	3	15	3
16	3	16	3				
51	3	51	3				

SIMBOLOGIA - SYMBOLS

Ø 20	Ø 20	Ø 20	Ø 22
● Per / For XWA 4 G20 XWA 4 G30	■ Per / For XWA 7 G22 XWA 7 G32 XWA 7 G35 XWA 7 G40	▲ Per / For XWA 8 G19 XWA 8 G29 XWA 8 G35	◆ Per / For XWA 9 G16 XWA 9 G24 XWA 9 G30
○ Per / For XWA 5.5 G22 XWA 5.5 G30 XWA 5.5 G40			

C Tolleranza coppia di serraggio 0÷10% / Tightening torque tolerance 0÷10%

⊕ Avvitare con Loxeal 55-14 / Screw with Loxeal 55-14

✕ Lubrificare con grasso Molykote PG54 solo sul diametro INTERNO / Lubricate with grease Molykote PG54 on the INNER diameter only.

(a) Per lo smontaggio utilizzare estrattore cod. 1940670 / For disassembly use an extractor code 1940670

Olio - Oil	
Tipo / Type	Quantità / Quantity
SAE 10W40	0,9 Kg